

# Your Intuitive, Reliable Office Partner.

Transform your workspace with quality you can rely on.



TASKalfa 3554ci Series

# It's Time to Evolve

New challenges demand a fresh approach. You need the best tools to drive your business forward during challenging times.

Meet the TASKalfa 3554ci Series: **robust, versatile platforms that have been built to last.** Combining cutting-edge technology and Kyocera's expertise, this new user-friendly series is ready to drive your productivity to new levels.

Meet the models!



**Print speeds**

**25 ppm**

**35 ppm**



**Scan speeds**

**up to 200 ipm**

**up to 200 ipm**



**Processor Document**

**up to 320 sheets**

**up to 320 sheets**



**Toner capacity\*  
(Black & white/  
color)**

**25,000/12,000**

**30,000/20,000**



**Enhanced security features**

**Encrypted data with authentication technology and automatic security certification checks**

\*Based on 5% coverage

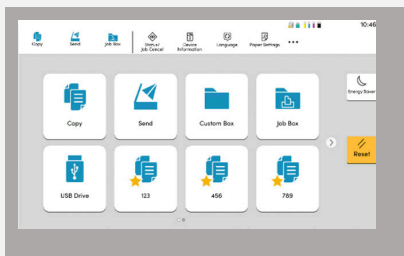


## Fewer pains. More gains.

Complex printer controls drain valuable time and can impact your overall productivity. With the new TASKalfa 3554ci Series, the user interface has been totally redesigned to minimize confusion and maximize your capabilities, so that you enjoy more time for you and your business.

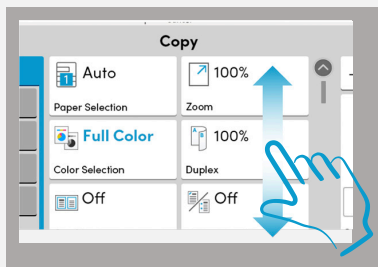
### Meet the new user interface

With standard colours and easy to understand icons, carrying out tasks at the printer has never been easier.



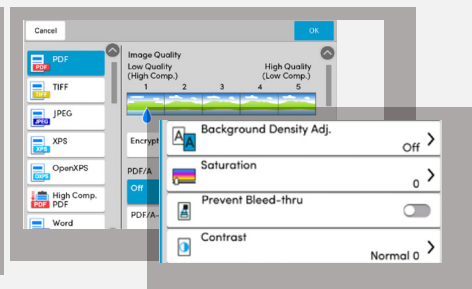
#### Simple

Standardised icons and graphics makes it easy to navigate the interface.



#### Intuitive

Emphasise important information and use gestures to select target items.



#### Efficient

Work quicker with less steps along with quick-switch settings.

# Productivity You Can Rely On

You can't put a price on knowing your machine is always going to work. The TASKalfa 3554ci Series provides maximum performance.

## Re-energise the way you work



### High performance

Fast print and scan speeds for maximum efficiency.



### Paper capacity

Less time filling paper trays means more time for quality work.



### Durability

Long-lasting toners ensure professional quality that lasts.



### Proven quality

Our devices have earned industry recognition for their reliability.



### Optimal security

Enjoy some of the most advanced security technology on the market today.

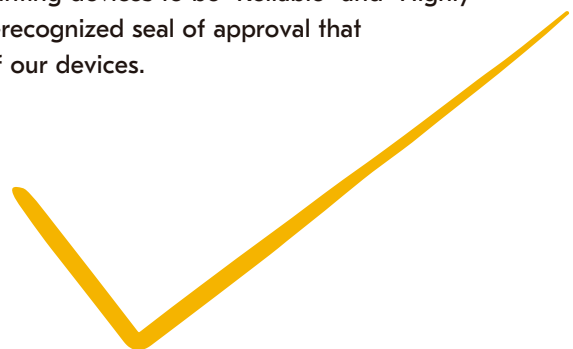


### Digitisation

Transform your workflows while pivoting to a paper-less workspace.



Keypoint Intelligence – Buyers Lab (BLI) has judged a wide variety of Kyocera multi-functional printing devices to be “Reliable” and “Highly Recommended,” a globally-recognized seal of approval that demonstrates the quality of our devices.



# Equip Your Business Against New Security Threats

With industry leading security protection, the TASKalfa 3554ci Series provide enhanced device and document security that address not only today's challenges, but the challenges of tomorrow as well. Security starts from the ground up and Kyocera ensures your data; your device and your network are always protected.

The Kyocera Evolution Series comes with a whole range of new security enhancements:

## Secure/Multipurpose Internet Mail Extensions (S/MIME)

Improves the security of email encryption by providing security for authentication, message integrity, the use of digital signatures and privacy and data security.

## Simple Certificate Enrollment Protocol (SCEP)

Automatically ensures that the device has the latest security certificates and makes the issuing of digital certificates as effortless as possible.

## Online Certificate Status Protocol/Certificate Revocation (OCSP/CRL)

Provides settings that can verify the validity of the certificates used in encrypted communications.

## Security Information and Event Management (SIEM)

Provides the ability to log security events that help monitor potential unauthorized operations like malware, intrusions and information leakage.

## TLS version 1.3 support

A faster, safer and more secure method of cryptography that encrypts data by providing secure communication between web browsers and servers.

**Kyocera's ISO/IEC-  
15408 Common Criteria  
certification shows our  
commitment to the highest  
standards of information security  
management.**

# Artificial Intelligence

Artificial Intelligence (AI) is transforming the world around us. Its impact can be felt in many aspects of our daily lives.

The TASKalfa 3554ci Series has integrated new AI functions to improve performance while enabling new capabilities to be added throughout its lifecycle so that you enjoy the best possible MFP devices at all times.



## Enhanced user experience and improved productivity

When scanning, you can now emphasise the handwritten part of the document without changing the format or image. This is a particularly useful function for proofreading documents, questionnaires, documents, drawings, etc. where thin lines and small characters are common. It's also possible to overwrite handwritten characters and lines on the document, using a white filler to make them invisible.

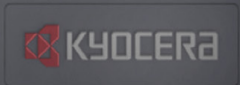
## Superior image quality

With the new AI functionalities, improving low resolution images is quick and easy.

The KX printer driver supports the 'Super Resolution' function that compares images with information on the internet, identifying and converting low-resolution images to professional quality. Not only do you get fantastic quality, but you also spend less time making manual changes.



# Join the Evolution

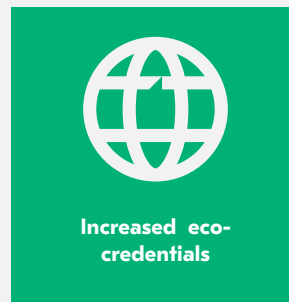
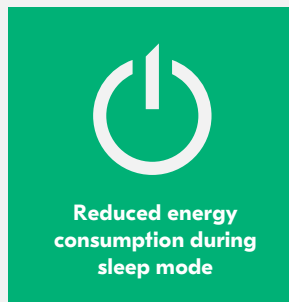
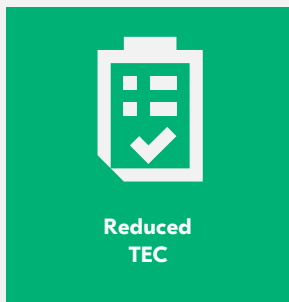




## Be lean. Be green.

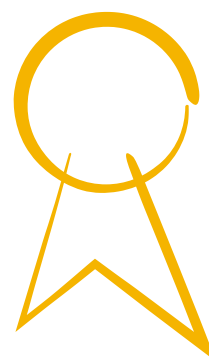
Work more efficiently while reducing your carbon footprint.

At Kyocera, we are committed to doing the right thing as a human being. By going that extra mile, we provide the solutions that help boost the way you work while reducing your carbon footprint.



The new TASKalfa 3554ci Series brings to the table reduced Typical Electricity Consumption (TEC) values without compromising on print speed or productivity. Meanwhile, energy consumption during sleep mode has been significantly reduced from 0.7W to 0.5W for both devices.

**Being ISO 14001:2015 certified shows we don't just talk about acting sustainably.**





# Your Pains. Our Solutions.

With the Kyocera Evolution Series you get:

## User-friendly interface

Tablet-like functionality makes life easy. No more frustration at the printer!

---

## Fast print and scan speeds

Get the documents you want when you need them and watch your productivity soar.

---

## Smart and scalable solutions

Get your team working as one with solutions that help workflows run smoothly and efficiently.

---

## Devices you can rely on

Kyocera devices are built to last the test of time. Get ready to say goodbye to costly downtime!

---

## Optimal security

With in-depth security capabilities you can rest assured that your confidential data is safe with Kyocera.

---

**So, what are you waiting for? Let's get to work!**





## TASKalfa 2554ci



A3 Colour Multifunctional

25/25 ppm for A4 (Colour/Mono)

4,800 x 1,200 dpi resolution

## Your Intuitive, Reliable and All-Round office partner

Designed to operate in dynamic work environments and ensure consistent productivity. The TASKalfa 2554ci is one of the most reliable products in the field featuring cutting edge security and intelligent features that will help your business focus on what matters. The 10.1" touchscreen with our newly designed simple and intuitive user interface will make operating this as easy as possible.

### Specifications

#### GENERAL

KYOCERA TASKalfa Laser Colour Multifunctional, HyPAS™ solution platform  
**Operation panel:** 256.5 mm (10.1 inch) full-colour touch panel display, speaker for job notification, 15° - 90° swivel mounted  
**Engine speed:** Up to 25/12 pages A4/A3 per minute, Duplex print/copy speed: 24 pages A4 per minute  
**Resolution:** 4800dpi equivalent x 1200dpi (print) 600 x 600 dpi (scan/copy)  
**Warm-up time:** 18 seconds or less  
**Time to first print:** 7/9.2 seconds or less in Mono/Colour  
**Time to first copy:** 7.4/9.8 seconds or less in Mono/Colour (DP), approx. 6.4/8.5 or less in Mono/Colour (Platen)  
**CPU:** ARM A53 (Quad Core) 1.6GHz  
**Memory:** Standard 4GB, 32GB SSD, Optional 320GB or 1TB  
**Standard interfaces:** USB 3.0 (Super-Speed USB), 4 x USB Host Interface, Gigabit Ethernet (10BaseT/100BaseTX/1000BaseT, IPv6, IPv4, IPsec, 802.3az support), optional Wi-Fi (IEEE 802.11a/b/g/n/ac), 2 eKUIO slots for optional internal print server or for optional fax system, slot for optional Wireless LAN, Slot for optional SD Card, NFC tag  
**Dimensions (W x D x H):** 602mm x 665mm x 790 mm  
**Weight:** Approx. 90 kg  
**Power source:** AC 220–240 V, 50/60 Hz  
**Power consumption:** Print Mode: 450 W; Copy Mode: 450 W; Ready Mode: 40 W; Sleep Mode: 0.5 W  
**Noise (surface sound pressure level: ISO 7779 measurement distance of 1 meter)**  
 Copying/Printing Mode in Colour: 49.0 dB(A) LpA Stand-by: 35dB(A)  
**Safety standards:** TÜV/GS, CE. This unit is manufactured according to ISO 9001 quality standard and ISO 14001 environmental standard.

#### PAPER HANDLING

All paper capacities quoted are based on paper thickness of max. 0.11mm. Please use paper recommended by Kyocera under normal environmental conditions.  
**Input capacity:** Multi-purpose tray: 150 sheets, 52–300 g/m<sup>2</sup>, (Banner 136–163g/m<sup>2</sup>), A6R - SRA3 (320 x 450 mm), Banner max. 304.8 x 1,220 mm, Standard universal paper cassette: 2 x 500 sheet 52 - 300g/m<sup>2</sup>, Upper cassette: A6R up to A4R, lower cassette A6R up to SRA3, Max. input capacity with options: 7,150 sheets A4  
**Duplex:** Standard supports 60–256 g/m<sup>2</sup>, SRA3 to A6R  
**Output capacity:** Standard 500 sheets face down, max. 5,000 sheets

#### PRINT FUNCTIONS

**Controller language:** PRESCRIBE  
**Emulations:** PCL6 (PCL5c/PCL-XL), KPDL3 (PostScript 3 compatible), PDF Direct Print, XPS Direct Print and OpenXPS  
**Operating systems:** All current Windows operating systems, MAC OS X Version 10.9 or higher, Unix, Linux, as well as other operating systems on request  
**Fonts/barcodes:** 93 outline fonts (PCL), 136 fonts (KPDL 3), 4 fonts (Calibri), 4 fonts (Cambria), 1 Bitmap font, 45 types of

one-dimensional barcodes, 1 type of two-dimensional barcode (PDF417)

**Print features:** Encrypted PDF 2.0 Direct Print, IPP printing, e-mail printing, WSD print, secure printing via SSL, IPsec, SNMPv3, quick copy, proof and hold, private print, job storage and job management functionality, Super Resolution  
**Mobile printing support:** AirPrint, Mopria, NFC, Direct Wi-Fi (optional), MyPanel and KYOCERA Mobile Print app for iOS and Android

#### COPY FUNCTIONS

**Max. original size:** A3/Ledger  
**Continuous copying:** 1–9,999  
**Zoom range:** 25–400% in 1% steps  
**Preset magnification ratios:** 5 Reductions/5 Enlargements  
**Exposure mode:** Manual: 17 steps  
**Image adjustments:** Text + Photo, Photo, Text, Diagram/Map  
**Features:** Scan-once-copy-many, electronic sort, 2in1, 4in1, image repeat, page numbering, cover mode, booklet copy, interrupt copy, form overlay, margin shift, auto cassette change, skip blank page, ID copy, Handwriting erase and highlight

#### SCAN FUNCTIONS

**Functionality:** Scan-to-email, Scan-to-FTP, Scan-to-SMB 3.0, Scan-to-USB Host, Scan-to-box, Network TWAIN, WSD scan (WIA Driver Network)  
**Scan speed:** 200 ipm (300 dpi, A4, duplex, with DP-7160/7170)  
**Scan resolution:** 600, 400, 300, 200 dpi, 256 greyscales per colour  
**Max. scan size:** A3, Ledger  
**Original recognition:** Text, photo, text + photo, Light Text / Fine Line, optimised for OCR  
**File types:** TIFF, PDF, PDF/A, JPEG, Open XPS, Encrypted PDF, High compression PDF, PDF/A-1a/b, PDF/A-2a/b/u, Searchable PDF (option), MS Office file (option)

#### FAX FUNCTIONS (OPTIONAL)

**Compatibility:** ITU-T Super G3  
**Modem speed:** Max. 33.6 kbps  
**Transmission time:** Less than 3 seconds (IBIG)  
**Scanning speed:** 2.0 seconds or less  
**Maximum original size:** A3/Ledger, Banner: 1,600mm  
**Compression method:** IBIG, MMR, MR, MH  
**Features:** Network faxing, rotate transmission, rotate reception, encrypted transmission and reception, duplex fax reception, memory reception, mailbox, remote diagnostics, polling transmission and reception, broadcast, Optional Internet-fax, dual fax with second fax system 12

#### CONSUMABLES

Average continuous toner yield in accordance with 5% coverage A4  
**TK-8369K Toner Kit:** Microfine toner black for 25,000 pages  
**A4 TK-8369C, TK-8369M, TK-8369Y Toner Kits:** Microfine toner cyan, magenta, yellow for 12,000 pages A4  
**Staples:** SH-10, 5000 x 3 staples, for BF-730, DF-7100, DF-7120 SH-12, 5000 x 3 staples, for DF-7140  
**WT-8500:** Waste Toner Bottle: 40,000 sheets (in accordance with 5% coverage, b/w : colour = 7:3)

#### OPTIONS

##### Fax System 12

##### Internet Fax Kit (A) AC

**Scan Extension Kit (A) AC:** Scan to searchable PDF solution (embedded OCR), convert to PDF or MS Office (docx, xlsx, pptx)  
**DP-7140:** (Reversing), 50 sheets, 45–160 g/m<sup>2</sup> (simplex), 50–120 g/m<sup>2</sup> (duplex), A5R – A3, Banner up to 1,900 mm  
**DP-7150:** (Reversing), 140 sheets, 35–160 g/m<sup>2</sup> (simplex), 50–120 g/m<sup>2</sup> (duplex), A6R–A3, Banner up to 1,900 mm  
**DP-7160:** (one-path duplex scanning), 320 sheets at 50 - 80 g/m<sup>2</sup>, 35–220 g/m<sup>2</sup> (simplex), 50–220 g/m<sup>2</sup> (duplex), A6R–A3, Banner up to 1,900 mm  
**DP-7170:** (one-path duplex scanning with ultrasonic sensor), 320 sheets at 50 - 80 g/m<sup>2</sup>, 35–220 g/m<sup>2</sup> (simplex), 50–220 g/m<sup>2</sup> (duplex), A6R–A3, Banner up to 1,900mm  
**DT-730(B):** Document tray  
**PF-7120:** Side Deck: 3,000 sheets, A4, 60–300 g/m<sup>2</sup>  
**PF-7140:** 2 x 500 sheets, 52–300 g/m<sup>2</sup>, A6R–SRA3  
**PF-7150:** 2 x 1,500 sheets, A4, 52–300 g/m<sup>2</sup>, A4, B5, Letter  
**DF-7100:** Inner finisher 500 sheets A4, 52–300 g/m<sup>2</sup>, A6R–SRA3 Stapling up to 50 sheets A4 or 30 sheets A3 at 3 positions  
**DF-7120:** 1,000 sheets A4, 52–300 g/m<sup>2</sup>, A6R–SRA3, Stapling up to 50 sheets A4 or 30 sheets A3 at 3 positions  
**DF-7140:** Main tray: 4,000 sheets A4, Sub tray: 200 sheets A4, 52–300 g/m<sup>2</sup>, A6R–SRA3, Stapling up to 65 sheets A4 or 30 sheets A3 at 3 positions  
**PH-7C:** Punch unit for DF-7120 and DF-7140

2-hole/4-hole/, 45–300 g/m<sup>2</sup>, A5R–A3

**MT-730(B):** Mailbox sorter for DF-7140

7 bins x 100 sheets A4, 50 sheets A3/B4, 60–163 g/m<sup>2</sup>

**BF-730:** Booklet and tri-folding unit for DF-7140, Half-folding:

52–256 g/m<sup>2</sup>, A3, B4, A4R, Booklet: Max. 20 sheets (64 pages, 60–90 g/m<sup>2</sup>), Non-staple folding: Max. 5 sheets (60–90 g/m<sup>2</sup>) Tri-folding: Tri folding : Max 5 sheets (60–120 g/m<sup>2</sup>, A4R), Multi tri-folding: 5 sheets (60–90 g/m<sup>2</sup>), 3 sheets, (91–120 g/m<sup>2</sup>)

**IS-7100:** 100-sheet internal job separator, 52–300 g/m<sup>2</sup>, A6R – SRA3

**IS-7110:** 250-sheet Inner shift tray, 52–300 g/m<sup>2</sup>, A6R – SRA3

**PH-7120:** Inner punch unit for inner finisher DF-7100

**HD-15:** HDD 320 GB

**HD-16:** HDD 1 TB

**NK-7120:** NK-7120 Numeric keypad

**UG-33 AC:** ThinPrint support

**UG-34 AC:** Emulation (IBM Proprinter/EPSON LQ-850/LinePrinter) **USB IC Card Reader + Card Authentication Kit (B) AC**

**IB-37:** Wireless Network Interface (USB : 5GHz/2.4GHz)

**IB-50:** GB-Ethernet board 10 BaseT/100 BaseTX/1,000 BaseT

**IB-51:** Wireless LAN Interface (802.11b/g/n)

**Platen cover Type (E)**

**1290/30:** Low cabinet for two tray configuration



## TASKalfa 3554ci



A3 Colour Multifunctional

35/35 ppm for A4 (Colour/Mono)

4,800 x 1,200 dpi resolution

## Versatility, Intelligence and Reliability at their best

The TASKalfa 3554ci is the ideal partner for an ever changing business environment featuring reliable performance with reduced maintenance requirements and latest security. Your team can stay focused on their own tasks while this MFP delivers the results they are counting on. The 10.1" touchscreen with our newly designed simple and intuitive user interface will make operating this device as easy as possible.

### Specifications

#### GENERAL

KYOCERA TASKalfa Laser Colour Multifunctional, HyPAS™ solution platform  
**Operation panel:** 256.5 mm (10.1 inch) full-colour touch panel display, speaker for job notification, 15° - 90° swivel mounted  
**Engine speed:** Up to 35/17 pages A4/A3 per minute, Duplex print/copy speed: 35 pages A4 per minute  
**Resolution:** 4800dpi equivalent x 1200dpi (print), 600 x 600 dpi (scan/copy)  
**Warm-up time:** 18 seconds or less  
**Time to first print:** 5.9/7.7 seconds or less in Mono/Colour  
**Time to first copy:** 6.3/8.5 seconds or less in Mono/Colour (DP), Approx. 5.3/ 7.0 seconds or less in Mono/Colour (Platen)  
**CPU:** ARM A53 (Quad Core) 1.6GHz  
**Memory:** Standard 4GB, 32GB SSD, optional 320GB or 1TB  
**Standard interfaces:** USB 3.0 (Super-Speed USB), 4 x USB Host Interface, Gigabit Ethernet (10BaseT/100BaseTX/1000BaseT, IPv6, IPv4, IPSec, 802.3az support), optional Wi-Fi (IEEE 802.11a/b/g/n/ac), 2 eKUIO slots for optional internal print server or for optional fax system, slot for optional Wireless LAN, Slot for optional SD Card, NFC tag  
**Dimensions (W x D x H):** 602 mm x 665 mm x 790 mm  
**Weight:** Approx. 90 kg  
**Power source:** AC 220–240 V, 50/60 Hz  
**Power consumption:** Print Mode: 590W; Copy Mode: 590W; Ready Mode: 40 W; Sleep Mode: 0.5 W  
**Noise (surface sound pressure level: ISO 7779 measurement distance of 1 meter)**  
 Copying/Printing: 49.0 dB(A) in colour  
 Stand-by mode: 35 dB(A)  
**Safety standards:** TÜV/GS, CE. This unit is manufactured according to ISO 9001 quality standard and ISO 14001 environmental standard.

#### PAPER HANDLING

All paper capacities quoted are based on paper thickness of max. 0.11 mm. Please use paper recommended by Kyocera under normal environmental conditions.  
**Input capacity:** Multi-purpose 150 sheets, 52 - 300g/m<sup>2</sup>, (Banner 136–163 g/m<sup>2</sup>), A6R - SRA3 (320 x 450 mm), Banner max. 304.8 x 1,220 mm, Standard universal paper cassette: 2 x 500 sheet, 52 - 300g/m<sup>2</sup>, Upper cassette: A6R up to A4R, lower cassette A6R up to SRA3, Max. input capacity with options: 7,150 sheets A4 Duplex: Standard 60 to 256 g/m<sup>2</sup>, SRA3 to A6R  
**Output capacity:** Standard 500 sheets face down, max. 5,000 sheets

#### PRINT FUNCTIONS

**Controller language:** PRESCRIBE  
**Emulations:** PCL6 (PCL5c / PCL-XL), KPDL3 (PostScript 3 compatible), PDF Direct Print, XPS Direct Print and OpenXPS  
**Operating systems:** All current Windows operating systems MAC OS X Version 10.9 or higher Unix, Linux, as well as other operating systems on request  
**Fonts/barcodes:** 93 outline fonts (PCL), 136 fonts (KPDL 3), 4 fonts (Calibri), 4 fonts (Cambria), 1 Bitmap font, 45 types of one-dimensional barcodes, 1 type of two-dimensional barcode

#### (PDF417)

**Print features:** Encrypted PDF 2.0 Direct Print, IPP printing, e-mail printing, WSD print, secure printing via SSL, IPsec, SNMPv3, quick copy, proof and hold, private print, job storage and job management functionality, Super Resolution  
**Mobile printing support:** AirPrint, Mopria, NFC, Direct Wi-Fi (optional), MyPanel and KYOCERA, Mobile Print app for iOS and Android

#### COPY FUNCTIONS

**Max. original size:** A3/Ledger  
**Continuous copying:** 1–9,999  
**Zoom range:** 25–400% in 1% steps  
**Pre-set magnification ratios:** 5 Reductions/5 Enlargements  
**Exposure mode:** Manual: 17 steps  
**Image adjustments:** Text + Photo, Photo, Text, Diagram/Map  
**Features:** Scan-once-copy-many, electronic sort, 2in1, 4in1, image repeat, page numbering, cover mode, booklet copy, interrupt copy, form overlay, margin shift, auto cassette change, skip blank page, ID copy, Handwriting erase and highlight

#### SCAN FUNCTIONS

**Functionality:** Scan-to-email, Scan-to-FTP, Scan-to-SMB 3.0, Scan-to-USB Host, Scan-to-box, Network TWAIN, WSD scan (WIA Driver Network)  
**Scan speed:** 200 ipm (300 dpi, A4, duplex, with DP-7160/7170)  
**Scan resolution:** 600, 400, 300, 200 dpi, 256 greyscales per colour  
**Max. scan size:** A3, Ledger  
**Original recognition:** Text, photo, text + photo, Light Text / Fine Line, optimised for OCR  
**File types:** TIFF, PDF, PDF/A, JPEG, Open XPS, Encrypted PDF, High compression PDF, PDF/A-1a/b, PDF/A-2a/b/u, Searchable PDF (option), MS Office file (option)

#### FAX FUNCTIONS (OPTIONAL)

**Compatibility:** ITU-T Super G3  
**Modem speed:** Max. 33.6 kbps  
**Transmission time:** Less than 3 seconds (JBIG)  
**Scanning speed:** 2.0 seconds or less  
**Maximum original size:** A3/Ledger, Banner: 1600mm  
**Compression method:** JBIG, MMR, MR, MH  
**Features:** Network faxing, rotate transmission, rotate reception, encrypted transmission and reception, duplex fax reception, memory reception, mailbox, remote diagnostics, polling transmission and reception, broadcast, Optional Internet-fax, dual fax with second fax system 12

#### CONSUMABLES

Average continuous toner yield in accordance with 5% coverage A4.  
**TK-8379K Toner Kit:** Microfine toner black for 30,000 pages A4  
**TK-8379C, TK-8379M, TK-8379Y Toner Kits:** Microfine toner cyan, magenta, yellow for 20,000 pages A4  
**Staples:** SH-10, 5000 x 3 staples, for BF-730, DF-7100, DF-7100 SH-12, 5000 x 3 staples, for DF-7140  
**WT-8500:** Waste Toner Bottle: 40,000 sheets (in accordance with 5% coverage, b/w : colour = 7:3)

#### OPTIONS

**Fax System 12**  
**Internet Fax Kit (A) AC**  
**Scan Extension Kit (A) AC:** Scan to searchable PDF solution (embedded OCR), convert to PDF or MS Office (docx, xlsx, pptx) **DP-7140:** (Reversing), 50 sheets, 45–160 g/m<sup>2</sup> (simplex), 50–120 g/m<sup>2</sup> (duplex), A5R – A3, Banner up to 1,900 mm  
**DP-7150:** (Reversing), 140 sheets, 35–160 g/m<sup>2</sup> (simplex), 50–120 g/m<sup>2</sup> (duplex), A6R–A3, Banner up to 1,900 mm  
**DP-7160:** (one-path duplex scanning), 320 sheets at 50 - 80 g/m<sup>2</sup>, 35–220 g/m<sup>2</sup> (simplex), 50–220 g/m<sup>2</sup> (duplex), A6R–A3, Banner up to 1,900 mm  
**DP-7170:** (one-path duplex scanning with ultrasonic sensor), 320 sheets at 50 - 80 g/m<sup>2</sup>, 35–220 g/m<sup>2</sup> (simplex), 50–220 g/m<sup>2</sup> (duplex), A6R–A3, Banner up to 1,900 mm  
**DT-730(B):** Document tray  
**PF-7120:** Side Deck: 3,000 sheets, A4, 60–300 g/m<sup>2</sup>  
**PF-7140:** 2 x 500 sheets, 52–300 g/m<sup>2</sup>, A6R–SRA3  
**PF-7150:** 2 x 1,500 sheets, A4, 52–300 g/m<sup>2</sup>, A4, B5, Letter  
**DF-7100:** Inner finisher 500 sheets A4, 52–300 g/m<sup>2</sup>, A6R–SRA3 Stapling up to 50 sheets A4 or 30 sheets A3 at 3 positions  
**DF-7120:** 1,000 sheets A4, 52–300 g/m<sup>2</sup>, A6R–SRA3, Stapling up to 50 sheets A4 or 30 sheets A3 at 3 positions  
**DF-7140:** Main tray: 4,000 sheets A4, Sub tray: 200 sheets A4, 52–300 g/m<sup>2</sup>, A6R–SRA3, Stapling up to 65 sheets A4 or 30 sheets A3 at 3 positions  
**PH-7C:** Punch unit for DF-7120 and DF-7140  
 2-hole/4-hole, 45–300 g/m<sup>2</sup>, A5R–A3  
**MT-730(B):** Mailbox sorter for DF-7140  
 7 bins x 100 sheets A4, 50 sheets A3/B4, 60–163 g/m<sup>2</sup>  
**BF-730:** Booklet and tri-folding unit for DF-7140, Half-folding:  
 52–256 g/m<sup>2</sup>, A3, B4, A4R, Booklet: Max. 20 sheets (64 pages, 60–90 g/m<sup>2</sup>), Non-staple folding: Max. 5 sheets (60–90 g/m<sup>2</sup>) Tri-folding: Tri folding : Max 5 sheets (60–120 g/m<sup>2</sup>, A4R), Multi tri-folding: 5 sheets (60–90 g/m<sup>2</sup>), 3 sheets, (91–120 g/m<sup>2</sup>)  
**JS-7100:** 100-sheet internal job separator, 52–300 g/m<sup>2</sup>, A6R – SRA3  
**JS-7110:** 250-sheet Inner shift tray, 52–300 g/m<sup>2</sup>, A6R – SRA3  
**PH-7120:** Inner punch unit for inner finisher DF-7100  
**PH-7130:** Inner punch unit for inner finisher DF-7100, Swedish type **HD-15:** HDD 320 GB  
**HD-16:** HDD 1 TB  
**NK-7120:** NK-7120 Numeric keypad  
**UG-33 AC:** ThinPrint support  
**UG-34 AC:** Emulation (IBM Proprinter/EPSON LQ-850/LinePrinter)  
**USB IC Card Reader + Card Authentication Kit (B) AC**  
**IB-37:** Wireless Network Interface (USB : 5GHz/2.4GHz)  
**IB-50:** GB-Ethernet board 10 BaseT/100 BaseTX/1,000 BaseT  
**IB-51:** Wireless LAN Interface (802.11b/g/n)  
**Platen cover Type (E)**  
**1290/30:** Low cabinet to suit two-tray configuration

Kyocera Document Solutions has championed innovative technology since 1934. We enable our customers to turn information into knowledge, excel at learning and surpass others. With professional expertise and a culture of empathetic partnership, we help organisations put knowledge to work to drive change.

The TASKalfa 3554ci Series incorporates extremely durable components that guarantee efficient and reliable operation to meet the demanding requirements of busy office environments. The TASKalfa 3554ci Series provides effective productivity and maximum flexibility, whilst ensuring minimum impact on the environment.

**Copysonic Australia**  
**315 Huntingdale Rd, Oakleigh**  
**Ph: 03 9544-0944**  
**Email: [info@copysonic.com.au](mailto:info@copysonic.com.au)**  
KYOCERA Document Solutions Partner

KYOCERA Document Solutions Australia  
Ph: 13 59 62  
[www.kyoceradocumentsolutions.com.au](http://www.kyoceradocumentsolutions.com.au)

KYOCERA Document Solutions New Zealand\*  
Ph: 0800 459 623  
[www.kyoceradocumentsolutions.co.nz](http://www.kyoceradocumentsolutions.co.nz)



[kyoceradocumentsolutions.com.au](http://kyoceradocumentsolutions.com.au)